

# U.S. 2020 CENSUS MONITORING AND ASSESSMENT

Paul Ong, Elena Ong, and Jonathan Ong

May 13, 2020



# U.S. 2020 CENSUS MONITORING AND ASSESSMENT

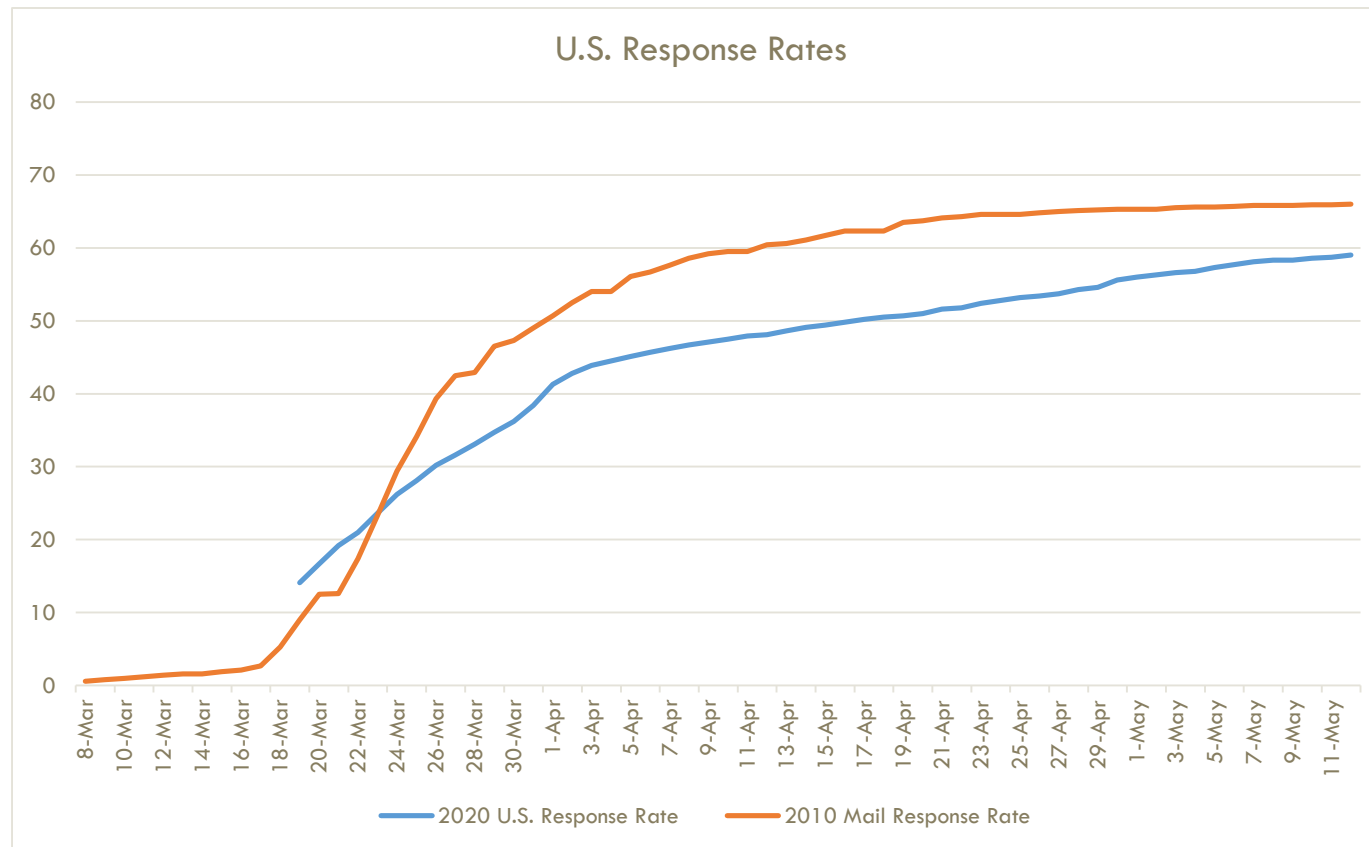
Occasional updates on Census 2020 self-response rates

Overview -- cumulative

Daily changes

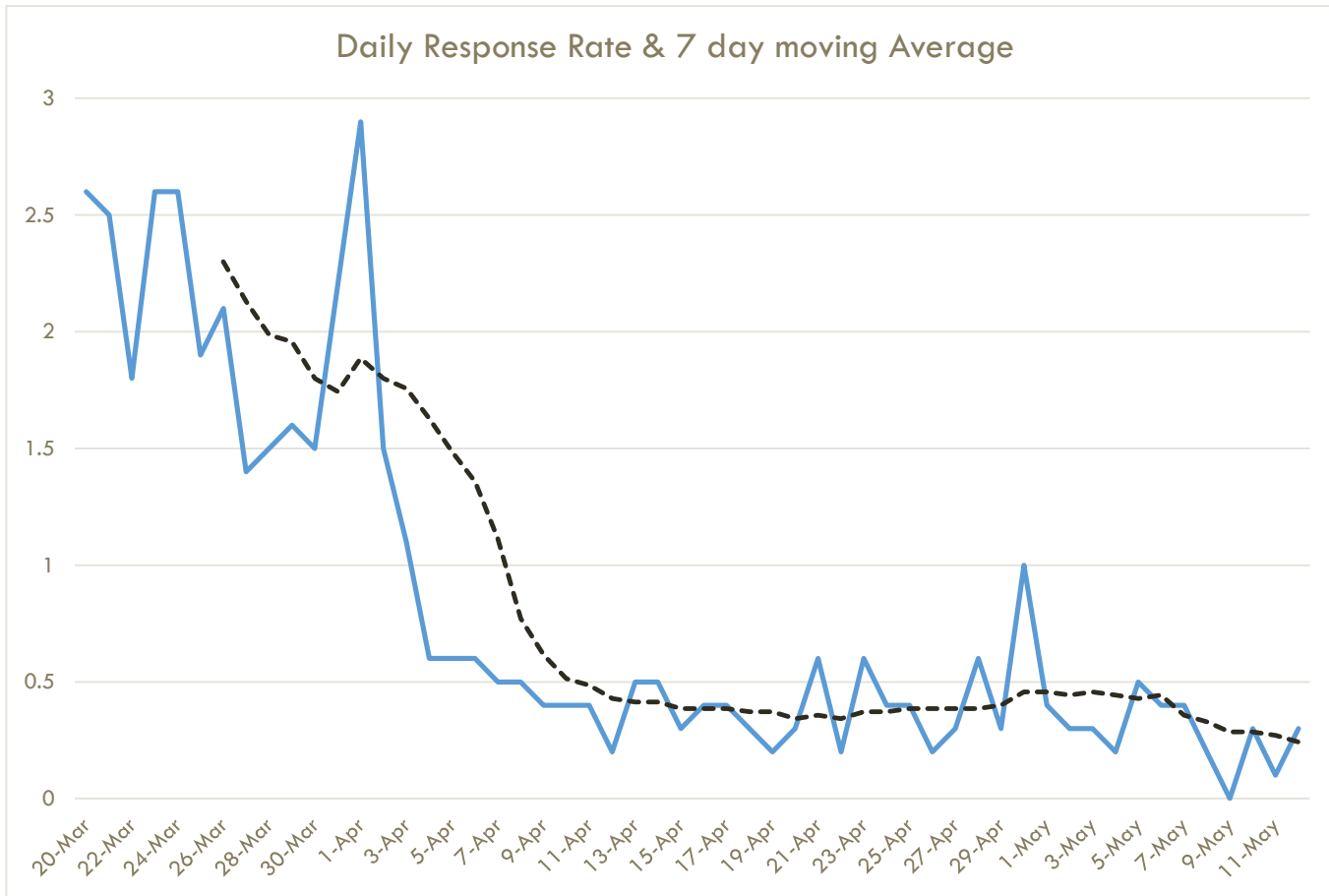
Short-term projection

# CUMULATIVE 2010 AND 2020



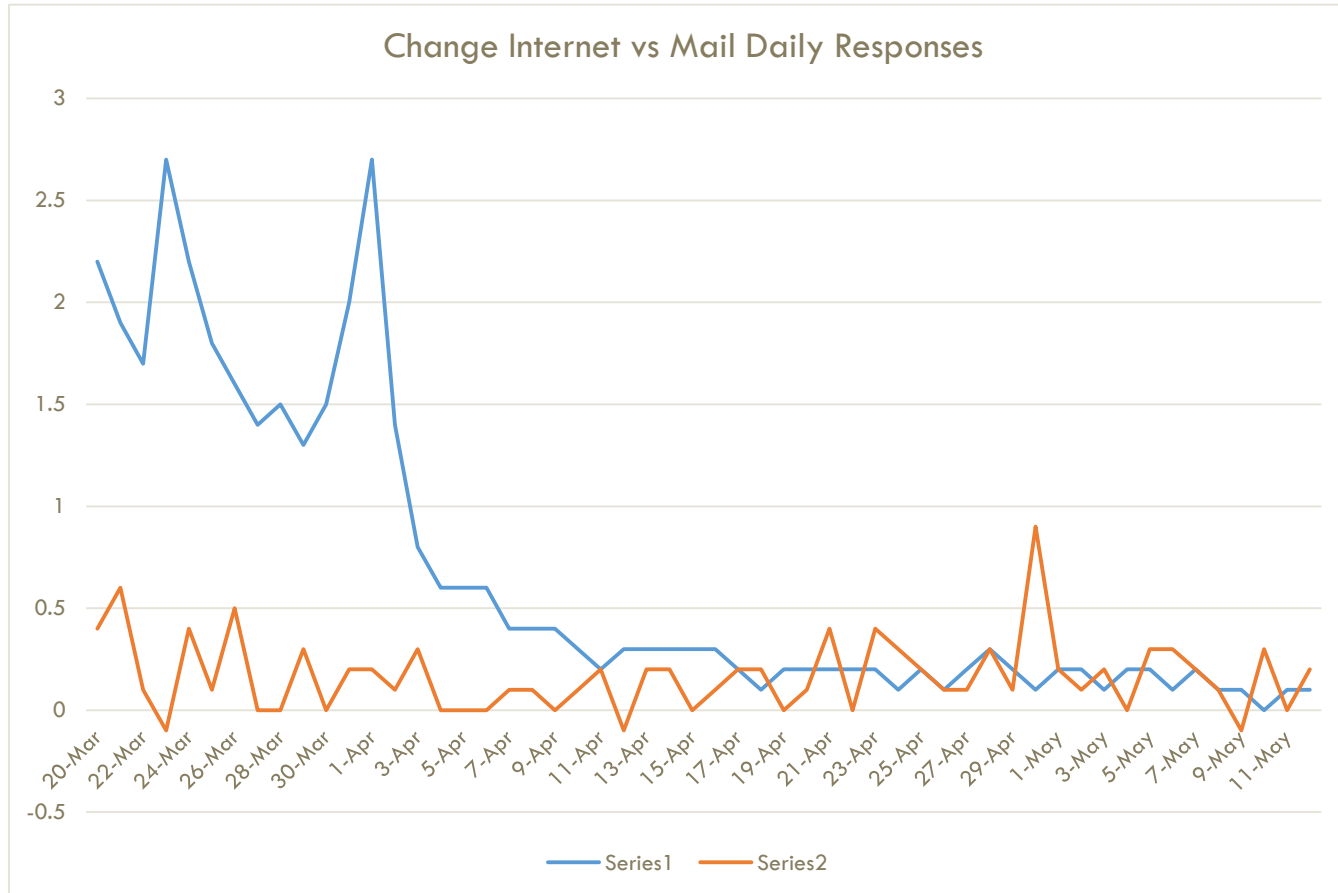
2020 started strong  
Ran into COVID-19 Crisis  
Fell progressive behind  
From late March to mid  
April. Since then, some  
catch up

# DAILY AND 7-DAY AVERAGE



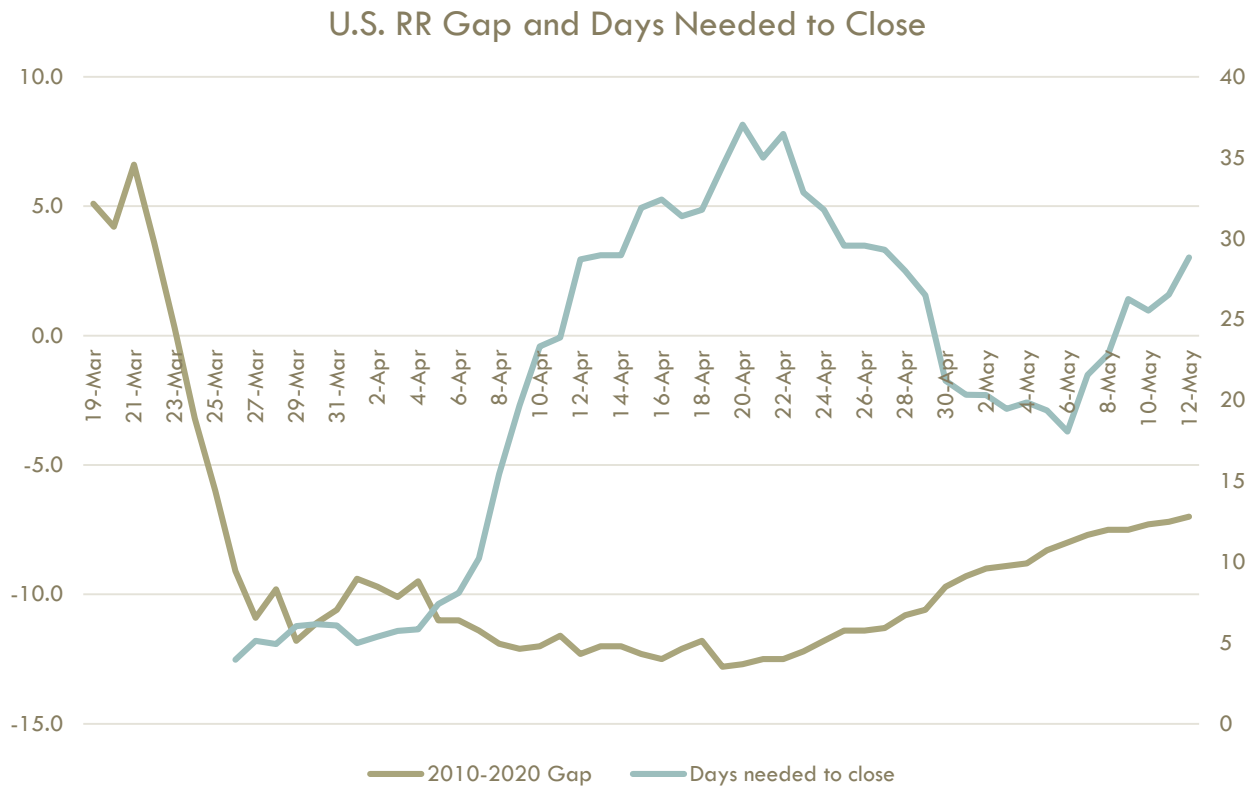
Daily and 7-day average declined noticeably and then flatten  
Was a small spike in late April  
Recent days indicates another decline period

# INTERNET VERSUS MAILING/PHONE



Early stage driven by Internet responses  
Evens out by mid-April with low rates  
End of April spike coincides with last postcard reminder

# PROJECTIONS ON CLOSING GAP



Gap widen quickly in late March. Remained wide for two months. Caught up some during late April and early May. Progress slowing